

A QUOI SERVENT LES RÉSEAUX DE SANTÉ RÉGIONAUX ?

A partager de manière électronique mes données de santé entre :



Les professionnels de la santé qui me soignent*

- Médecins généralistes
- Médecins spécialistes
- Autres prestataires de soins (dentistes, kinés, pharmaciens, infirmiers,...)



Les institutions

- Hôpitaux
- Pharmacies
- Laboratoires
- Centres de radiologie







Moi, le patient

- Et ma/mes personne(s) de confiance
- Et toute(s) personne(s) mandatée(s)
- Ou mon/mes parent(s) (enfant -12 ans)



Les réseaux de santé régionaux

-  Réseau Santé Bruxellois
-  Réseau Santé Wallon
-  CoZo
-  Nexushealth

Connectés
entre eux via
Masanté

*L'accès aux données dépend de la profession

WAT IS HET NUT VAN REGIONALE GEZONDHEIDSNETWERKEN?

Mijn gezondheidsgegevens elektronisch delen met :



De zorgverleners die me behandelen*

- Huisartsen
- Medisch specialisten
- Andere zorgverleners (tandartsen, kinesitherapeuten, apothekers, verpleegkundigen enz.)



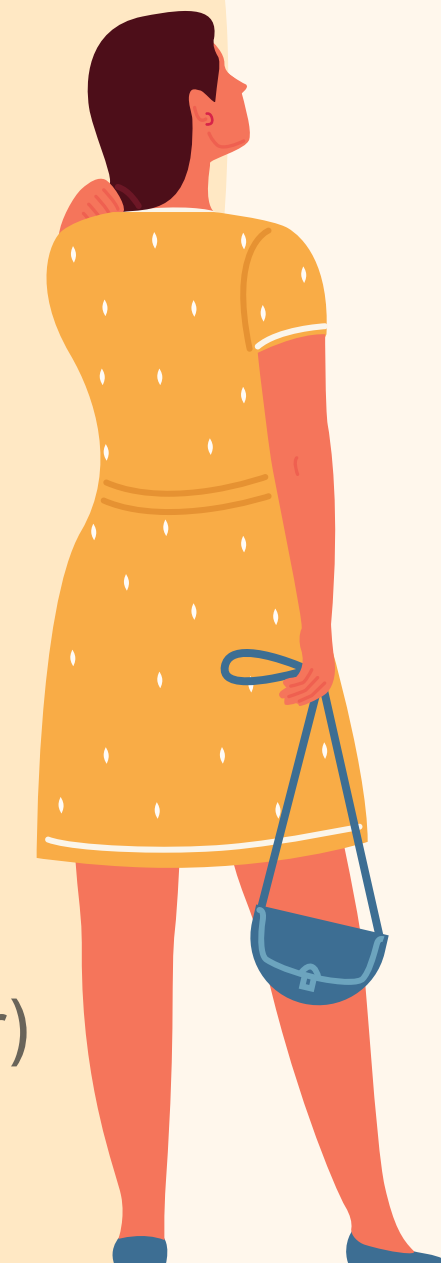
Instellingen

- Ziekenhuizen
- Apotheken
- Laboratoria
- Radiologie-organisaties







Mij, de patiënt

- En mijn vertrouwenspersoon/-personen
- En andere personen met een mandaat
- Of mijn ouder(s) (kinderen onder 12 jaar)



Regionale gezondheidsnetwerken

-  Brussels Gezondheidsnetwerk
-  Réseau Santé Wallon
-  CoZo
-  Nexushealth

Verbonden
met elkaar via
Mijngezondheid

*Toegang tot gegevens is afhankelijk van het beroep

WHAT ARE REGIONAL HEALTH NETWORKS FOR?

An electronic exchange of my health care data between:



The health care professionals who treat me*

- General practitioners
- Specialists
- Other care providers (dentists, physiotherapists, pharmacists, nurses...)



The institutions

- Hospitals
- Pharmacies
- Laboratories
- Radiology centers







Me, the patient

- And my person(s) of trust
- And all authorised representative(s)
- Or my parent(s) (children under 12)



Regional health networks

-  Brussels Health Network
-  Reseau Santé Wallon
-  CoZo
-  Nexushealth

Interconnected
via


*Access to data depends on the profession

WOZU DIENEN DIE REGIONALEN GESUNDHEITSNETZWERKE?

Meine Gesundheitsdaten elektronisch teilen mit:



Den medizinischen Dienstleistern, die mich behandeln*

- Allgemeinmediziner und Fachärzte
- Andere Gesundheitsdienstleister (Zahnärzte, Physiotherapeuten, Apotheker, Pflegepersonal usw.)



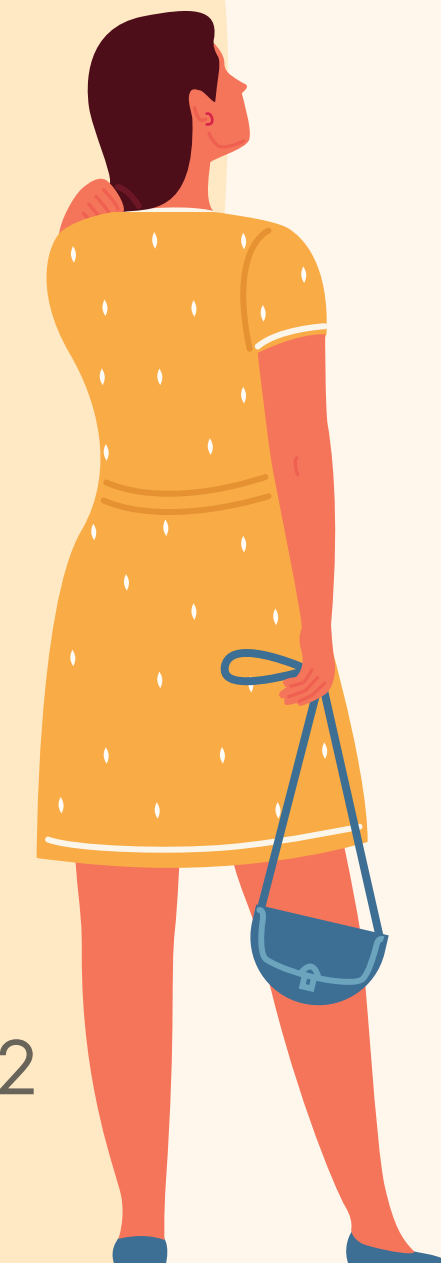
Einrichtungen

- Krankenhäuser
- Apotheken
- Laboratorien
- Radiologie-organisationen







Mir, dem Patienten

- Und meiner/n Vertrauensperson(en)
- Und anderen Personen mit einer Vollmacht
- Oder meinen Eltern (bei Kindern unter 12 Jahren)



Regionale Gesundheitsnetze

-  Brüsseler Gesundheitsnetzwerk
-  Réseau Santé Wallon
-  CoZo
-  Nexushealth

Miteinander verbunden über
Meinegesundheit

*Zugriff auf Daten hängt vom Beruf ab